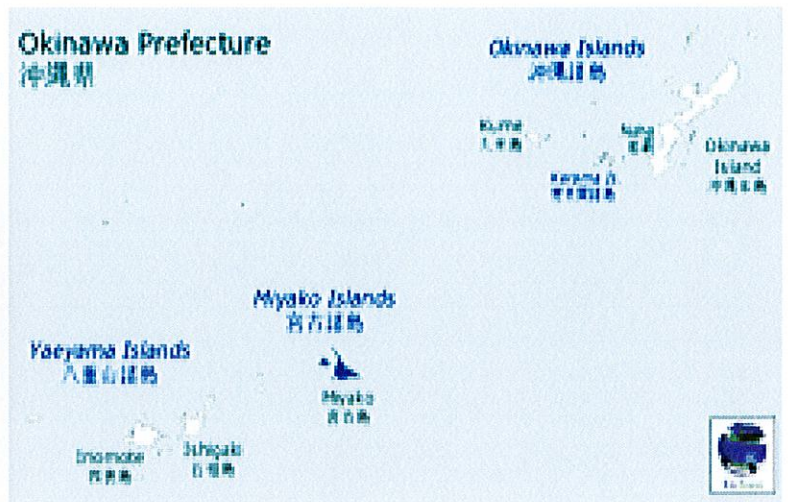




Kokusai Dori (Okinawa)



OKINAWA, MIYAKOJIMA ISLAND & OSAKA FALL SPECIAL

October 8 – 20, 2025

Tour cost starting from

\$ 5,795.00

Package rate includes:

- All flights as stated in the itinerary
- 11 nights hotel accommodations

HANEDA -	Villa Fontaine Grand Haneda Airport (1 night)
OKINAWA -	Hotel Royal Palm or similar (5 nights)
MIYAKOJIMA ISLAND -	Hotel Peace Island Miyakojima (2 nights)
OSAKA -	IP City Hotel Osaka (3 nights)
- Daily breakfast and meals as stated in the itinerary
- English speaking guide or assistant on transfers and sightseeing tours as stated in the itinerary
- Rate is per person based on double occupancy
- Single Supplement Rate - \$895.00 additional cost

Palms Travel Express

77 Waiale Road, Suite 101
Wailuku, HI 96793

(808) 243-3709

Okinawa, Miyakojima Island & Osaka Fall Special

October 8 - 20, 2025

Group Term and Conditions:

- A valid passport is required for travel to Japan
- Your package price may change slightly until paid in full due to the fluctuation of the yen.
- A change fee applies for voluntary changes or cancellations.
- **We highly recommend that you purchase optional travel insurance (see us for details and rates)**
- Itinerary changes may occur due to weather conditions, safety conditions and tour availability

Deposit and Final Payment:

- A \$500.00/person deposit will be required to confirm your reservation.
- The remaining final balance is due on or by: Wednesday, July 3, 2025.
- If your reservation is made after the final balance date, the full payment is due at time of booking
- If your remainder balance payment is not made within the above required date, Palms Travel Express reserves the right to cancel your reservations.

Participation:

For the benefit of everyone in your tour group, Palms Travel Express reserves the right to accept or reject any person as a tour participant whose conduct is deemed incompatible with the interest of the other participants.

Cancellation dates and changing Fees: (Please read very carefully)

- | | |
|---------------------|-------------------------|
| • From June 4, 2025 | 50% of total tour cost |
| • From July 4, 2025 | 100% of total tour cost |

Responsibility:

The tour participant agrees that neither Palms Travel Express nor its affiliates shall be liable for any damage, loss (including person injury, death and property loss) or expense occasioned by any act of omission of any supplier providing services, or any insurer or insurance administrator under the Travel Protection Plan, or of any other person, or situations beyond the control of Palms Travel Express, including weather, natural disaster, war, civil unrest, and order of government immigration regulations.

PALMS TRAVEL EXPRESS
77 Waiale Road, Suite 101
Wailuku, HI 96793
(808) 243-3709

Okinawa, Miyakojima Island & Osaka Fall Special

★(Featuring the 20th Kajimana Hula Festival in Miyakojima)★

October 8 – 20, 2025

★ Visiting: Miyakojima Island, Naha, Osaka ★
★ Celebrating the 60th Anniversary of Maui-Miyakojima Sister City Relationship ★
(established in 1965)

ITINERARY

Wednesday, October 8 KAHULUI / TOKYO (Haneda)

Depart Kahului to Haneda Airport via Honolulu .

08 OCT 25 - WEDNESDAY

HAWAIIAN 235 SPECIAL CL EQUIP-717

LV: KAHULUI MAUI 1225P NONSTOP MILES- 101 CONFIRMED

AR: HONOLULU 108P FLYING TIME- :43

ARRIVAL TERMINAL-1

JAPAN AIRL 71 COACH CLASS EQUIP-789

DEPART TERMINAL-2

LV: HONOLULU 405P NONSTOP MILES- 3831 CONFIRMED

AR: TOKYO/HANEDA 745P FLYING TIME- 8:40 ARVL DATE-09 OCT

ARRIVAL TERMINAL-3

MEAL

Thursday, October 9 TOKYO

Arrive at Haneda Airport at 7:45pm. You will be clearing customs and immigration.

Walk to your hotel in the airport.

No meals included.

Hotel accommodations at

Hotel Villa Fontaine Grand Haneda Airport

Located in: Haneda Airport Garden

Address: Japan, 〒144-0041 Tokyo, Ota City,

Hanedakuko, 2 Chome-7-1 1階

Phone: +81 3-6459-9770



Friday, October 10 TOKYO / MIYAKOJIMA

Breakfast at the hotel included.
Check out of hotel.

8:00am Depart hotel to the
Haneda Airport for your flight
to Miyakojima Island, Okinawa.

10 OCT 25 - FRIDAY

JAPAN AIRL 933 COACH CLASS EQUIP-BOEING 767 JET

DEPART TERMINAL-1

LV: TOKYO/HANEDA 1045A NONSTOP MILES- 1158 CONFIRMED

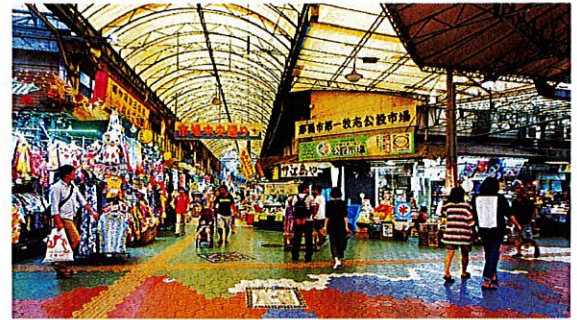
AR: MIYAKO JIMA 140P FLYING TIME- 2:55

Upon arrival in Miyakojima, transfer to your
Hotel by private vehicle is included.

Dinner included - TBA

Hotel accommodations at:
Hotel Peace Island Miyakojima (2 nights)
Or similiar

(B,D)



Kokusai dori

Saturday, Oct 11 MIYAKOJIMA ISLAND (B)

Breakfast at the hotel included.

Attend the "**Kagimana Hula Festival in Miyakojima**" is a hula event held in Miyakojima, Okinawa, a tropical island, since 2013. At the "International Hula Competition", you can enjoy hula competitions by teams from Japan and abroad. You can also enjoy free live performances such as hula dancing on the outdoor special stage with the Miyako Blue as a backdrop. Why not experience the tropical atmosphere with hula in Miyakojima, home to the most beautiful sea in Japan?

"**Key**" is a Miyakojima dialect word meaning "**beautiful** " "**Mana**" means "**soul**" in Hawaiian. The name of the tournament, "Kagimana Hula," means "Spirit of the Beautiful Islands," and is intended to express the beautiful spirit of Maui and Miyakojima through the event.

Purpose of the Kagimana Hula Contest

Okinawa and Hawaii both have unique island and subtropical characteristics, and share many commonalities in terms of geographical environment, customs, climate, and industry.

Furthermore, many immigrants from Okinawa live in the two prefectures, and the second and third generation people are proud of Okinawa, and many people enjoy studying Ryukyu performing arts in Hawaii.

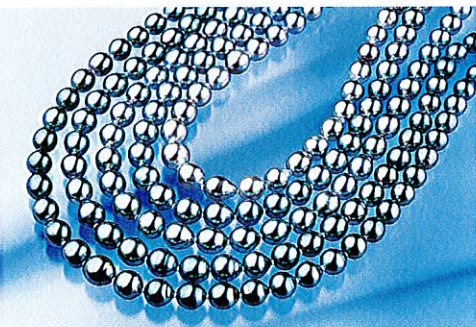
Miyakojima and Maui, Hawaii, became sister cities in June 1965, and this year marks the 60th anniversary of that relationship. More than ever, a wide range of exchanges, mainly in terms of people and culture, are taking place, and there are high expectations for the future.

In the future, we will develop this as an exchange of cultural traditions between the two maritime peoples, connecting the "people, things, and information" of both sides, and we believe that hosting the national hula tournament in Miyakojima will contribute to attracting more tourists and revitalizing the local economy.

Hotel accommodations at Hotel Peace Island Miyakojima or Similar (2 nights)



Miyakojima Souvenirs



Sunday, October 12 MIYAKOJIMA / NAHA (B)

Breakfast at the hotel included. Check out of hotel.

9:00am – Sightseeing with English speaking guide,
visiting:

- Muiga Cliff
- Irabu Bridge
- Fruit farm Garden
- Underwater Aquarium

4:00pm Arrive at Miyakojima Airport for your flight to Naha, Okinawa

12 OCT 25 - SUNDAY

JAPAN TRANS 572 COACH CLASS EQUIP-73H

LV: MIYAKO JIMA 605P NONSTOP MILES- 177 CONFIRMED

AR: OKINAWA 700P FLYING TIME- :55

ARRIVAL TERMINAL-DOMESTIC

Upon arrival in Naha, transfer to your hotel with private vehicle with bags.
Pick up dinner on our way to the hotel

Hotel accommodation at Hotel Naha or similar (5 nights)

Monday, October 13 NAHA (B)

Breakfast at the hotel included.

Free day to explore Kokusai Dori(street)
Lunch is on your own.

Dinner is included at local restaurant.

Hotel accommodation at Hotel Naha or similar (5 nights)

Tuesday, October 14

NAHA

(B,L)

Breakfast at the hotel is included.

Northern Area Day Tour:

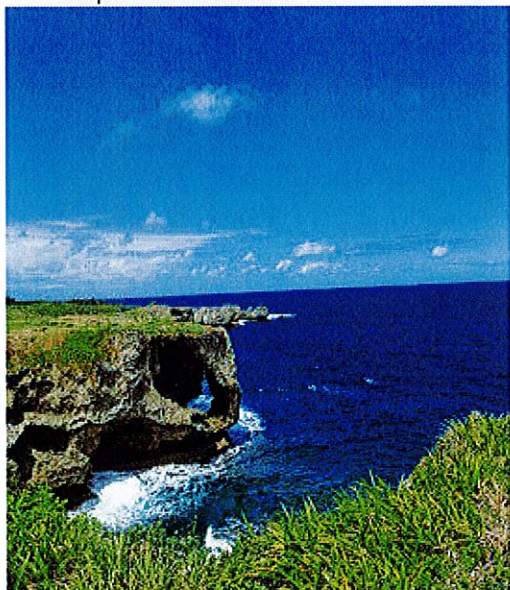
Highlights

- Enjoy the beauty of Okinawa and learn more about its rich history and culture
- Have an unforgettable experience of viewing Cape Manzamo, Churaumi Aquarium, and Kouri Island!
- Lunch included at local restaurant
- Visit Northern Okinawa and feel the vibe of Japanese-style architecture!

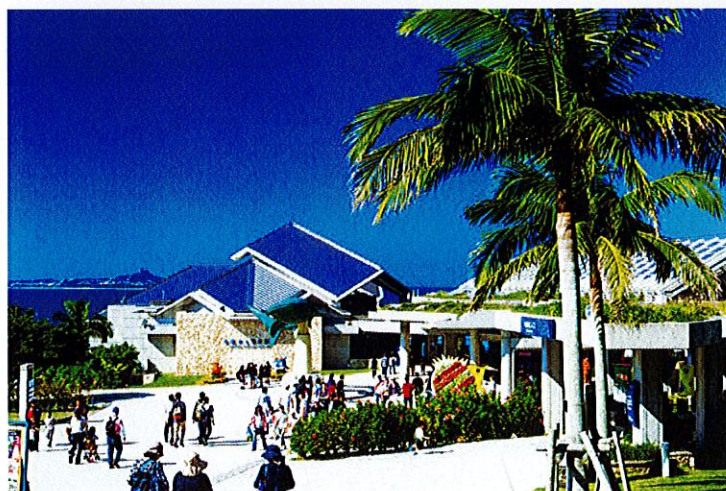
Dinner is not included.

Hotel accommodation is at: Hotel Naha
Or similar

Cape Manzamo



Churaumi Aquarium



NOTES & MEMORIES: _____

Wednesday, October 15

NAHA

(B,L)

Breakfast at the hotel is included.

Enjoy your day sightseeing with your guide visiting:

- Daiichi Makishi Public Market
- Okinawa soba lunch is included
- Shuri Castle

Dinner is not included

Hotel accommodation is at: Hotel Naha
Or similar



Shuri Castle



Makishi Market

Thursday, October 16

NAHA

(B)

Breakfast at the hotel included.

Southern Area Day Tour:

Highlights

- On this pleasant day tour of the island, see the scenic views and popular attractions of Southern Okinawa
- Visit Okinawa World and explore Gyokusendo Cave, a natural stalactite cave formed over 300,000 years; Eisa Drum Show
- Enjoy the fresh fish and freshly fried tempura at Itoman Fishing Cooperative Fish Center; Himeyuri Peace Museum (if time permits)
- Experience the atmosphere of a Mediterranean town in Senaga island
- If you enjoy shopping, you'll have a good afternoon at Okinawa Outlet Mall Ashibinaa

Lunch and Dinner is not included.

Hotel accommodations at: Hotel Naha or similar



Friday, October 17**NAHA / OSAKA****(B,D)**

Breakfast at the hotel included. Check out of the hotel.

8:30 am - Transfer from hotel to Naha Airport for your flight to Osaka by private vehicle with your bags.

17 OCT 25 - FRIDAY

JAPAN TRANS 4 COACH CLASS EQUIP-73H

DEPART TERMINAL-DOMESTIC

LV: OKINAWA 1115A NONSTOP MILES- 739 CONFIRMED

AR: OSAKA/KANSAI 115P FLYING TIME- 2:00

ARRIVAL TERMINAL-1

Upon arrival at Kansai Airport (Osaka), transfer to your hotel by private vehicle with English speaking assistant.

Lunch is not included.

Dinner included at your hotel.

Hotel accommodation -

IP City Hotel Osaka (4 NIGHTS) or Similar

Saturday, October 18**OSAKA****(B)**

Breakfast at the hotel included.

9:00 am - Sightseeing with English speaking guide, visiting:

- Nishiki Market
- Lunch on your own
- Nara Park
- Todaiji Temple
- Isuien Japanese Garden

Dinner is not included.

Hotel accommodation -

IP City Hotel Osaka (4 NIGHTS)

Or Similar

Nara Park



Sunday, October 19

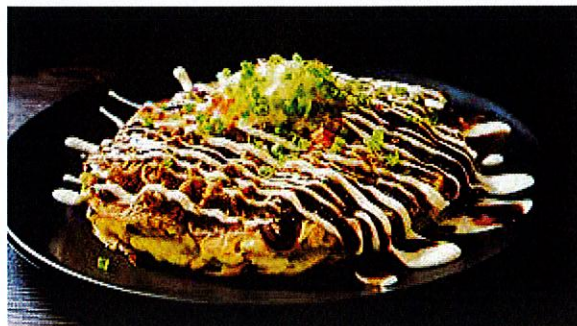
OSAKA / KYOTO / OSAKA

(B,D)

Breakfast at the hotel included.

Sightseeing to Kyoto: Take train
from Osaka Station to Kyoto Station.

- Kinkaku-ji Temple
- Rickshaw Ride
- Arashiyama (bamboo forest)
- Pickup bento at train station



Farewell dinner included at local restaurant.

Okonomiyaki

Hotel accommodations - IP City Hotel Osaka (4 NIGHTS) or Similar

Notes/Memories: _____

Monday, October 20 OSAKA / RETURN HOME (B)

Breakfast at the hotel included.

Request late check out until departure transfer from hotel to Kansai Airport. Relax and explore the vibrant food scene in Osaka.

5:00pm – Transfer from hotel to Kansai Airport on a private van.

20 OCT 25 - MONDAY

JAPAN AIRL 792 COACH CLASS EQUIP-789

DEPART TERMINAL-1

LV: OSAKA/KANSAI 1010P NONSTOP MILES- 4106 CONFIRMED

AR: HONOLULU 1045A FLYING TIME- 7:35

ARRIVAL TERMINAL-2

MEAL

HAWAIIAN 296 SPECIAL CL EQUIP-717

DEPART TERMINAL-1

LV: HONOLULU 145P NONSTOP MILES- 101 CONFIRMED

AR: KAHULUI MAUI 228P FLYING TIME- :43

Welcome home!! Hope you had a memorable time. Thank you and
Until we meet again...



Palms Travel Express

77 Waiale Road, Suite 101

Wailuku, HI 96793

(808) 243-3709